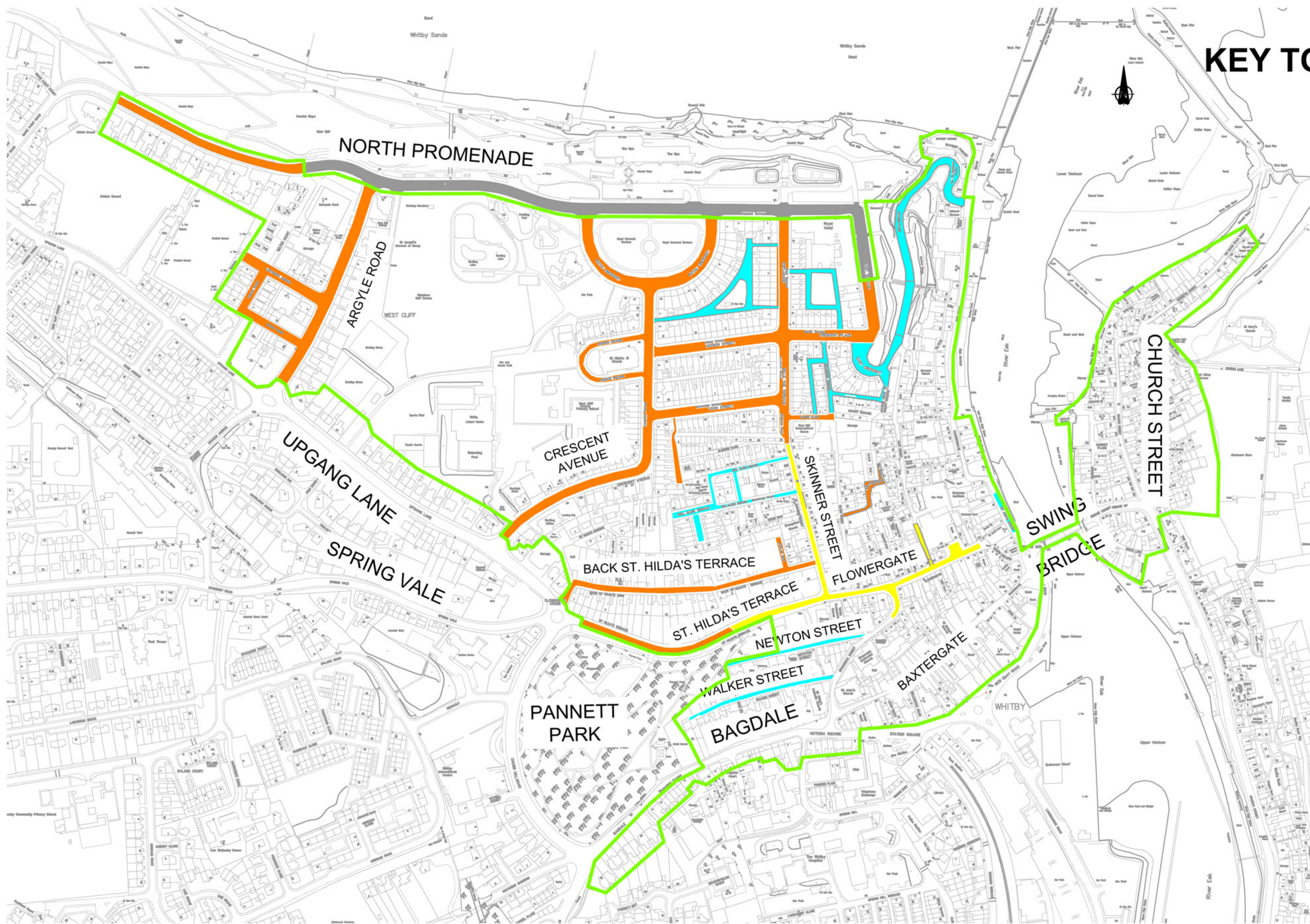


KEY TO PARKING TYPES

-  Approved zone boundary. (All properties within zone eligible for permits)
-  Permit holders and 2 hour disc parking
-  Permit holders only (no disc parking)
-  1 hour disc parking (no permit holders)
-  Pay and Display area



Whitby Controlled Parking

**Scheme approved 29th January 2014
for implementation by Easter 2014**